

Lake Springfield Index

Category	Item	Count	
CWLP FACILITIES	CWLP Lake Security, R-3		
	Dallman Power Plant, S-4	2	
	Lake Services, T-13		
	Property Management Center (PMC), T-2		
RECREATION FACILITIES	Water Purification Plant, S-3		
	Beach House & Beach Park, T-9		
	Bridgeview Park and Bridgeview Building, J-18	27	
	Center Park, U-9		
	Dividing Dam, V-8		
	East Cotton Hill Park, N-17		
	Tom Madonia Park East and West, U-2		
	Henson Robinson Zoo, V-9	9	
	Double-J Campground, K-21		
	KOA Campground, V-16	7	
PUBLIC LAUNCHING RAMPS	Lake Park, V-9	1	
	Lincoln Greens Golf Course (North End), T-5	3	
	Lincoln Greens Golf Course, (South End), T-6		
	Lincoln Memorial Gardens, R-16		
	Muni Opera, V-6		
	Sayre Fishing Pier, N-16		
	Sunset View Fishing Area, U-10		
	Sunset View Monarch Way Station, U-10		
	West Cotton Hill Park, N-17		
	West Shoreline (North of RR Bridge), D-12	36	
	Wildlife Sanctuary (Middle Area), I-18	26	
	Wildlife Sanctuary (Northern Area), J-16	31	
	Wildlife Sanctuary (Southern Area), I-19	28	
	PUBLIC BOAT DOCKS	Lindsay Bridge, T-9	
		Sailboat Launch, T-9	
Spaulding Dam, T-2			
Center Park Harbor, U-9			
Lake Springfield Marina, K-17			
Marine Point (sailboats and small craft), Q-14			
LAKE AREA ROADS		Bridgeview Park, J-18	
		West Cotton Hill, N-17	
		Tom Madonia Park East, U-2	
		Kayak Launch, H-20	
	Lake Park, V-9		
	Lake Springfield Marina, K-17		
	Sailboat Launch, T-9		
	Center Park Harbor, U-9		
	OTHER	Bay Island, R-14	16
		West Shoreline (North of RR Bridge), D-13	36

About Lake Springfield...

Elevation (top of dam):
560 feet above sea level

Average Depth:
12.5 feet

Storage Capacity:
17 billion gallons

Surface Area (flooded portion):
3,965 acres

Marginal Land (surrounding flooded portion):
4,300 acres

Shoreline:
57 miles

Principal Uses:

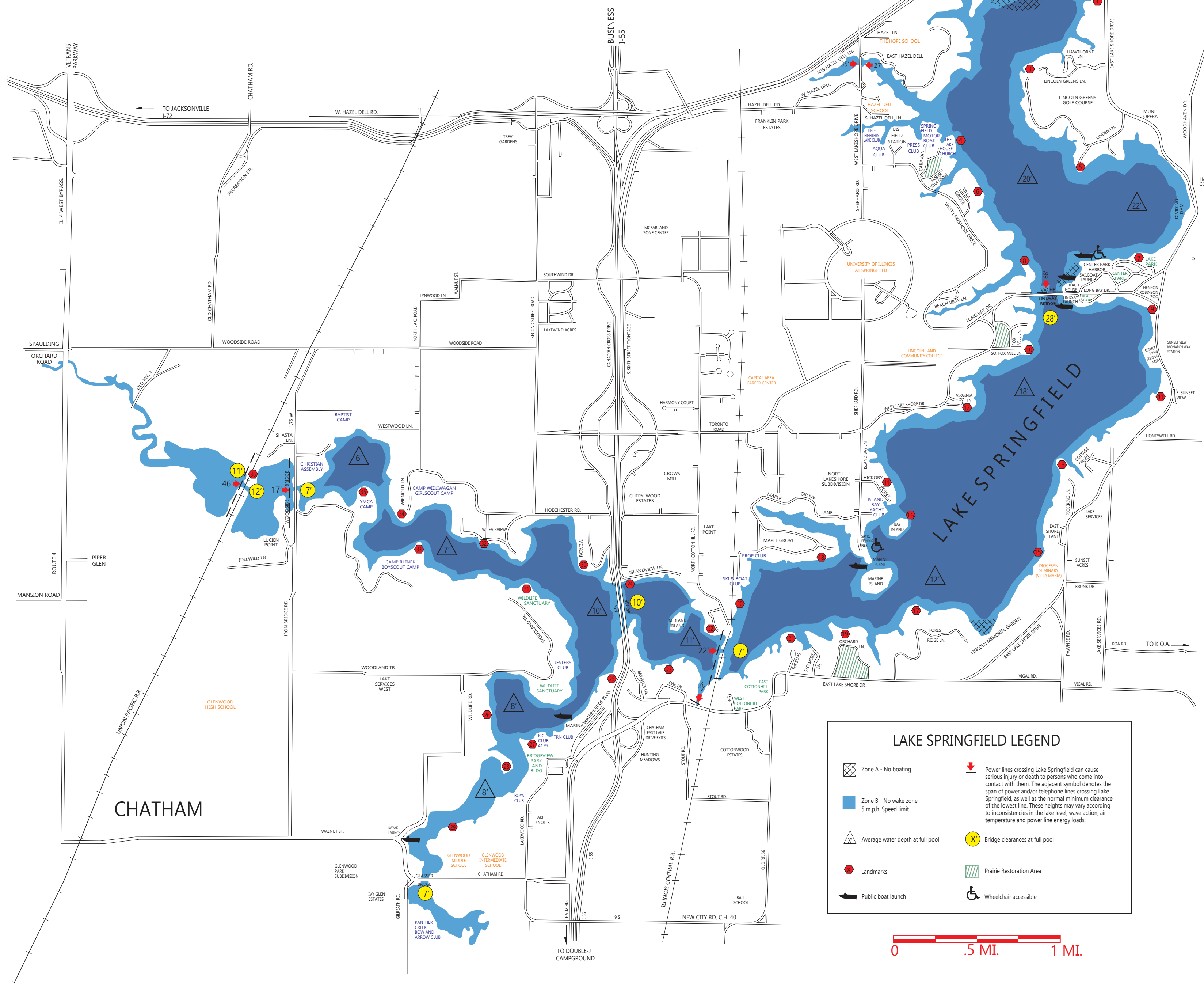
- Water supply for citizens of Springfield and unincorporated areas, as well as Grandview, Jerome, Leland Grove, Loami, Rochester, Southern View, the Round Prairie Water Cooperative, the Sugar Creek Public Water District, and the Williamsville-Sherman Water Commission
- Public recreation

Other Uses:

- Utility operations
- Residential and commercial properties
- Clubs, camps and other private organizations



LAKE SPRINGFIELD & VICINITY



A B C D E F G H I J K L M N O P Q R S T U V

1
2
3
4
5
6
7
8
9
10
11
12
13
14
15
16
17
18
19
20
21

