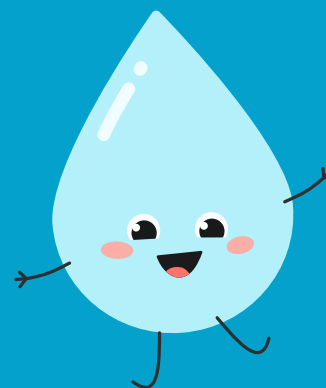


2023 WATER QUALITY REPORT

CITY WATER, LIGHT AND POWER
SPRINGFIELD, ILLINOIS

APRIL 2024



About This Report

The City of Springfield is pleased to bring you the 25th annual Water Quality Report for consumers of drinking water provided by your municipal utility, City Water, Light & Power (CWLP). We hope the information provided here will enlighten you about some of the monitoring undertaken to evaluate the production of your drinking water. Details about where the water comes from, what it contains, and how it compares to standards set by the regulatory agencies are included. As this report will demonstrate, the City of Springfield is committed to providing you with high quality water.

In 2023, as in years past, tap water produced by City Water, Light & Power met all United States Environmental Protection Agency (USEPA) and State of Illinois drinking water

health standards. The purification process is monitored 24 hours each day, and CWLP is pleased to report the utility had **no violations** of a contaminant level or of any other water quality standards in 2023. This report, which summarizes the quality of water CWLP provided last year, and other utility information are available on the CWLP website at www.cwlp.com.

CWLP utility issues are discussed at City Council meetings at 5:30 p.m. on the first and third Tuesdays of each month and at the Council Committee of the Whole meetings held at 5:30 p.m. on the Tuesday of each week prior to a City Council meeting. These meetings are open to the public and are held in the City Council chambers on the third floor of Municipal Center West, 300 S. 7th Street.

About Drinking Water Contaminants

The sources of drinking water (both tap water and bottled water) include rivers, lakes, streams, ponds, reservoirs, springs, and wells. As water travels over the surface of the land or through the ground, it dissolves naturally occurring minerals and, in some cases, radioactive material, and can pick up substances resulting from the presence of animals or from human activity. Possible contaminants consist of:

- *Microbial contaminants*, such as viruses and bacteria, which can come from sewage treatment plants, septic systems, agricultural livestock operations, and wildlife;
- *Inorganic contaminants*, such as salts and metals, which can be naturally occurring or result from urban stormwater runoff, industrial or domestic wastewater discharges, oil and gas production, mining, or farming;
- *Pesticides/herbicides*, which can come from a variety of sources, such as agriculture, urban stormwater runoff, and residential uses;
- *Organic chemical contaminants*, including synthetic and volatile organic chemicals, which are byproducts of industrial processes and petroleum production and can also come from gas stations, urban stormwater runoff and septic systems;
- *Radioactive contaminants*, which can be naturally occurring or the result of oil and gas production and mining activities.

Some people may be more vulnerable to contaminants in drinking water than the general population. Immuno-compromised persons—such as persons with cancer undergoing chemotherapy, persons who have undergone organ transplants, people with HIV/AIDS or other immune system disorders, some elderly,

and infants—can be particularly at risk from infections. These people should seek advice about drinking water from their health-care providers. EPA/Centers for Disease Control (CDC) guidelines on appropriate means to lessen the risk of infection by Cryptosporidium and other microbial contaminants are available from the USEPA's Safe Drinking Water Hotline (1-800-426-4791).

Drinking water, including bottled water, may reasonably be expected to contain at least small amounts of some contaminants. The presence of contaminants does not necessarily indicate that water poses a health risk. More information about contaminants and potential health effects can be obtained by calling the USEPA's Safe Drinking Water Hotline (1-800-426-4791).

To ensure tap water is safe to drink, the USEPA prescribes regulations that limit the amount of contaminants in water provided by public water systems. The Illinois Environmental Protection Agency (IEPA) administers the drinking water program in Illinois under rules adopted by the Illinois Pollution Control Board. These rules are identical in substance to those of the USEPA. Food and Drug Administration (FDA) regulations establish limits for contaminants in bottled water, which must provide the same protection for public health.

Due to a favorable monitoring history, the USEPA and IEPA have issued no variances or exemptions to the CWLP Water Division.

This Water Quality Report includes tables that will give you a better picture of the drinking water contaminants CWLP tested for and detected during 2023.

Testing and Reporting Regulated Contaminants

The *Detected Contaminants* table on page 3 lists all contaminants detected in drinking water produced by CWLP during 2023. Although testing was conducted for many more contaminants, only those substances listed in the table were found in the water. If you would like a full list of all tested substances, call the CWLP Water Purification Plant at (217) 757-8630.

All sources of drinking water contain some naturally occurring contaminants. At low levels, these substances are generally not harmful in our drinking water. Removing all contaminants would be extremely expensive and, in most cases, would

not provide increased protection of public health. A few naturally occurring minerals might actually improve the taste of drinking water and have nutritional value at low levels.

In the *Detected Contaminants* table on page 3 and the *Common Quality Analyses of Springfield Drinking Water* table on page 4, you might find a number of terms and abbreviations that are not familiar to you. To help you better understand these terms, please check the *Measurement Definitions, Definitions of Terms and Data Table Footnotes* on page 4.

Cryptosporidium Monitoring

Cryptosporidium is a microbial parasite found in surface water throughout the United States. Filtration removes Cryptosporidium, but the most commonly used filtration methods cannot guarantee 100 percent removal. Ingestion of Cryptosporidium can cause cryptosporidiosis, the symptoms of which include nausea, diarrhea, and abdominal cramps. Most healthy individuals can overcome the infection within a few weeks, but people who are immunocompromised have a greater risk of developing a life-threatening illness. The disease may be spread through means other than

drinking water, such as poor sanitation practices.

Past monitoring has indicated the presence of Cryptosporidium in our source water, but these organisms have never been detected in the drinking water. Treatment processes have been optimized to ensure that if there are Cryptosporidium cysts in the source water, they will be removed during the treatment process. By maintaining low turbidity, a result of efforts to remove particles from the water, the threat of Cryptosporidium organisms getting through the treatment process and into the drinking water system is greatly reduced.

Source Water Assessment

Lake Springfield is the surface water source of our drinking water. It contains over 17 billion gallons of water and covers about 3,965 acres. Its 265-square-mile watershed, including the Sugar and Lick Creek drainage areas, is composed primarily of agricultural land. During times of low precipitation, water is pumped from the South Fork of the Sangamon River at its confluence with Horse Creek.

To convert this raw water supply to drinking water, lake water is pumped through CWLP's Water Purification Plant where chemical reactions are initiated to assist in the removal of algae, suspended solids, hardness and many chemical constituents. The clarification basins remove the bulk of these materials and the final filter beds remove very small particles. Fluoride is added to

prevent tooth decay; chlorine to disinfect the finished water; and ammonia to stabilize the chlorine in the distribution system.

Illinois EPA considers all surface water sources of community water supplies to be susceptible to potential pollution problems; hence, the reason for mandatory treatment for all surface water supplies in Illinois. Mandatory treatment includes coagulation, sedimentation, filtration, and disinfection. Causes of pollution to lakes include nutrients, siltation, suspended solids, and organic enrichment. Primary sources of pollution include agricultural runoff, land disposal (septic systems), and shoreline erosion. If you would like a copy of the assessment, call the Water Purification Plant at (217) 757-8630.

Lead

The Lead and Copper Rule (LCR) was developed to protect public health by minimizing lead levels in drinking water. The LCR established an action level of 15 ppb for lead based on the 90th percentile level of tap water samples collected. Lead is sampled on a mandated three-year testing cycle with sampling conducted at the customer's tap.

If present, elevated levels of lead can cause serious health problems, especially for pregnant women and young children. Lead in drinking water is primarily from materials and components associated with service lines and home plumbing. CWLP is responsible for providing high quality drinking water, but cannot control

the variety of materials used in plumbing components within a building. When your water has been sitting for several hours, you can minimize the potential for lead exposure by flushing your tap for 30 seconds to 2 minutes before using water for drinking or cooking.

If you are concerned about lead in your water, you may wish to have your water tested. Information on lead in drinking water, testing methods, and steps you can take to minimize exposure is available from the Safe Drinking Water Hotline, (1-800-426-4791), at <http://www.epa.gov/safewater/lead> or <https://cwlpl.com/leadawareness>.

Perfluoroalkyl and Polyfluoroalkyl Substances (PFAS)

In 2023, CWLP's Public Water System (PWS) sampled 29 PFAS chemicals under the USEPA Fifth Unregulated Contaminant Monitoring Rule (UCMR5). If you are interested in examining the results, please contact Andrew James at 217-757-8630 ext. 1702. For more information about PFAS health advisories visit, <https://epa.illinois.gov/topics/water-quality/pfas/pfas-healthadvisory.html>.

2023 Detected Contaminants						
CONTAMINANT (unit of measurement) Typical source of contaminant	MCLG	MCL	Highest Level Found ¹	Range of Detections ¹	Violation	Date of Sample
Microbial Contaminants						
TURBIDITY ² (NTU) (%≤0.3 NTU) soil runoff	n/a	TT	100.00	100-100		
TURBIDITY ² (NTU) soil runoff	n/a	1NTU _{max}	0.33	n/a		
Inorganic Contaminants						
BARIUM (ppm) discharge of drilling wastes, metal refineries; erosion of natural deposits	2	2	0.015	n/a		
COPPER (ppm) corrosion of household plumbing systems; erosion of natural deposits	1.3	AL=1.3	0.065	0 exceeding AL		2022
FLUORIDE ³ (ppm) erosion of natural deposits; water additive to promote strong teeth; discharge from fertilizer and aluminum factories	4	4	0.6	0.6 – 0.7		
LEAD ⁴ (ppb) corrosion of household plumbing systems; erosion of natural deposits	0	AL=15	ND	1 exceeding AL		2022
NITRATE ⁵ (as NITROGEN) (ppm) runoff from fertilizer use; leaching from septic tanks, sewage; erosion of natural deposits	10	10	1.52	ND – 1.52		
Disinfectants/Disinfection By-Products						
HALOACETIC ACIDS (HAA5) (ppb) by-product of drinking water disinfection	n/a	60	24.1	14.2 – 27.4		
CHLORAMINE (as Cl ₂) (mg/L) water additive used to control microbes	MRDLG=4	MRDL=4	2	2 – 2		
TOTAL TRIHALOMETHANES (TTHMs) (ppb) by-product of drinking water disinfection	n/a	80	45.9	26.6 – 65.4		
Radioactive Contaminants						
RADIUM (COMBINED 226/228) (pCi/L) erosion of natural deposits	0	5	1.01	n/a		2020
State Regulated Contaminants⁶						
SODIUM ⁷ (ppm) erosion of natural deposits; leaching	n/a	n/a	11.3	n/a		
Unregulated Contaminants⁸						
HAA6BR (ppb) by-product of drinking water disinfection	n/a	n/a	5.07	3.36-5.88		2020
HAA9 (ppb) by-product of drinking water disinfection	n/a	n/a	31.69	16.43-36.69		2020
MANGANESE (ppb) naturally occurring element	n/a	n/a	2.9	ND-2.9		2020
PERFLUOROBUTANOIC ACID (PFBA) (ppb) breakdown product of of PFAS	n/a	n/a	0.006	ND-0.006		
Total Organic Carbon⁹ See Data Table Footnote 9, p4						

Unless otherwise noted, the data presented in this table is from testing done in the calendar year of the report. The EPA or the State requires CWLP to monitor for certain contaminants less than once per year because the concentrations of these contaminants do not vary significantly from year to year, or the system is not considered vulnerable to this type of contamination. As such, some of our data, though representative, may be more than one year old. In this table you will find terms and abbreviations that might not be familiar to you. To help you better understand these terms, we have provided the definitions on page 4.

Common Quality Analyses of Springfield Drinking Water

<i>Values in ppm unless otherwise noted</i>	<i>Minimum</i>	<i>Average</i>	<i>Maximum</i>
pH ¹⁰ (units)	9.2	9.5	9.7
TOTAL ALKALINITY (as CaCO ₃) ¹¹	31	48	67
TOTAL HARDNESS (as CaCO ₃) ¹¹	76	97	136
CALCIUM HARDNESS (as CaCO ₃) ¹¹	48	67	94
MAGNESIUM HARDNESS (as CaCO ₃) ¹¹	6	30	68
RESIDUAL CHLORINE, TOTAL	1.3	2.3	3.0

Measurement Definitions

<i>n/a</i>	Not applicable.	<i>%≤0.3NTU</i>	Percent of samples less than 0.3 NTU.
<i>nd</i>	Not detected at testing limits.	<i>ppm (mg/L)</i>	Parts per million, or milligrams per liter.
<i>NTU</i>	Nephelometric Turbidity Unit; measures cloudiness in drinking water.	<i>ppb (ug/L)</i>	Parts per billion, or micrograms per liter.
		<i>pCi/L</i>	Picocuries per liter; measures radioactivity.

Definition of Terms

Maximum Contaminant Level Goal (MCLG) Level of a contaminant in drinking water below which there is no known or expected risk to health. MCLGs allow for a margin of safety.

Maximum Contaminant Level (MCL) Highest level of a contaminant allowed in drinking water. MCLs are set as close to MCLGs as feasible using the best available treatment technology.

Maximum Residual Disinfectant Level Goal (MRDLG) Level of disinfectant in drinking water below which there is no known or expected health risk.

Maximum Residual Disinfectant Level (MRDL) Highest level of disinfectant allowed in drinking water.

Highest Level Found Highest level found of sample result data collected during the calendar year. It may represent a single sam-

ple if only one sample was collected.

Range of Detections Range of individual sample results, from lowest to highest, collected during the calendar year.

Date of Sample If a date is provided, the IEPA requires monitoring for this contaminant less than once per year because concentrations change infrequently. If no date appears, monitoring for this contaminant was conducted during the calendar year of this report.

Action Level (AL) Concentration of a contaminant that, if exceeded, triggers treatment or other requirements that a water system must follow.

Treatment Technique (TT) Required process intended to reduce the level of a contaminant in drinking water.

Data Table Footnotes

¹**Informational Statement** The Range of Detections column includes data from all samples taken to satisfy various monitoring requirements. Values in the Highest Level Found column represent only data collected for the IEPA compliance monitoring program.

²**Turbidity** Measure of the cloudiness of the water caused by suspended particles. A good indicator of water quality and the effectiveness of our filtration system and disinfectants.

³**Fluoride** Added to the water supply to promote strong teeth. The Illinois Department of Public Health recommends an optimal fluoride range of 0.6 mg/L to 0.8 mg/L.

⁴**Lead** See Page 2 description.

⁵**Nitrate** Nitrate in drinking water at levels above 10 ppm is a health risk for infants of less than six months of age. High nitrate levels in drinking water can cause blue baby syndrome. Nitrate levels may rise quickly for short periods of time because of rainfall or agricultural activity. If you are caring for an infant, you should ask for advice from your health care provider.

⁶**State Regulated Contaminants** In an effort to ensure the safest water possible, the Illinois EPA requires water suppliers to moni-

tor some contaminants not regulated by the USEPA.

⁷**Sodium** There is no state or federal MCL for sodium. Monitoring is required to provide information to consumers and health officials who are concerned about sodium intake due to dietary precautions. If you are on a sodium-restricted diet, consult a physician about this level.

⁸**Unregulated Contaminants** A maximum contaminant level (MCL) for these contaminants has not been established by either State or Federal regulations, nor has mandatory health effects language been set. The purpose of unregulated contaminant monitoring is to assist USEPA in determining the occurrence of unregulated contaminants in drinking water and whether future regulations are warranted.

⁹**Total Organic Carbon (TOC)** The percentage of TOC removal was measured each month and CWLP met all TOC removal requirements.

¹⁰**pH** Measure of hydrogen ion concentration expressed as acidity or alkalinity. The pH scale is in units of 0-14, where 7 is neutral, less than 7 is acidic, and greater than 7 is alkaline.

¹¹**CaCO₃** Calcium carbonate.

